



Quick Installation Guide

BDG-256 GATEWAY

For more information, please visit our website:
<http://www.northernep.com>

CONNECT TO POWER GRID (BDG-256)

Plug the AC power cord into a dedicated power outlet. Once connected, the gateway will take several minutes to boot up.

1. BDG-256 works on voltages between 100Vac - 240Vac.
2. Install the gateway on a dedicated outlet as close to the solar-fed circuit breaker as possible.
3. Do not plug the gateway into a power strip or GFDI outlet.
4. For split-phase power grid (U.S., Canada, Mexico, Japan, Philippine), we recommend using NEMA 6-15 240V power outlet



NEMA 6-15 outlet

CONNECT TO POWER GRID (BDG-256P3)

BDG-256P3 connects to a 3-phase power grid directly

BDG-256P3-NA



U.S., Japan, Canada
Mexico, Philippine

BDG-256P3-AU



Australia
New Zealand

BDG-256P3-EU



Europe

INPUT MICRO INVERTER SERIAL NUMBER

Through gateway touch screen



S/N format: (e.g. 21508-0005F123-U, input the whole string "21508-0005F123-U" or "0005F123" or "5F123")
Phase assignment: A – (L1-L3 or L1-N), B – (L2-L3 or L2-N), C – (L1-L2 or L3-N) (U.S or Europe/Australia)

Through built-in web page

(e.g. <http://10.208.32.52/module>)

10.208.32.52 is the gateway IP at the bottom of the touch screen

Inverter COM-ID Administration

(e.g. 21508-0005F123-U, input the whole string or "0005F123" or "5F123")

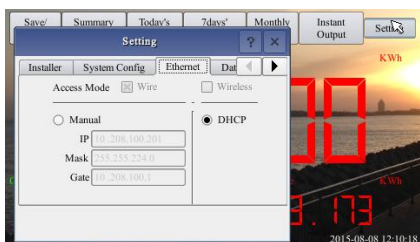
Inverter	COM ID	phase
Inverter1:	0001AA04	A
Inverter2:	10001002	A
Inverter3:	10001003	A
Inverter4:	10001004	A
Inverter5:	10001005	A
Inverter6:	10001006	A
Inverter7:	10001007	A
Inverter8:	10000135	A
Inverter9:	10009011	A



Note: Handheld barcode scanner is a very helpful tool in inputting the inverter SN

CONNECT TO INTERNET

BDG-256 can be connected to internet *using a cable*. "DHCP" is the default option and most commonly used.

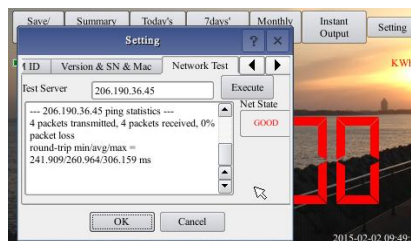


Refer to "Wi-Fi Configuration Guide" for setting up Wi-Fi

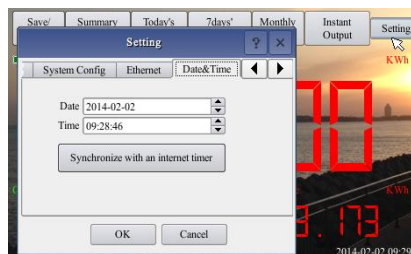


TEST NETWORK CONNECTION

Navigate through "Setting" to "Network Test", and then click on "Execute". If the "Net State" shows **Good**, then the gateway has connected to internet.



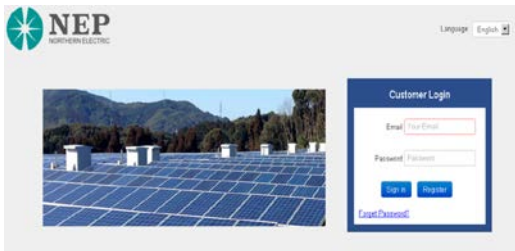
SET DATE/TIME



NEPVIEWER Remote Monitoring

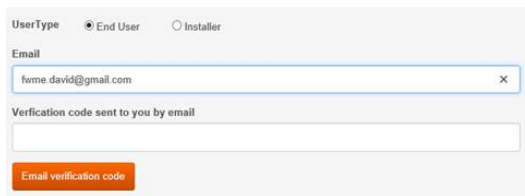
<http://user.nepviewer.com/>

Follow the instructions and fill in information



NOTE: NEPVIEWER supports *IE 9.0 or later, Firefox, Chrome, Apple iOS and Android* web browsers

REGISTER USER ACCOUNT



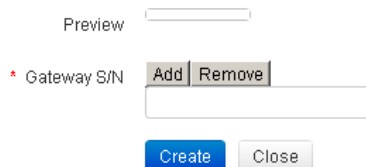
Verification code is sent to the email address registered

ADD PV SITE INFORMATION

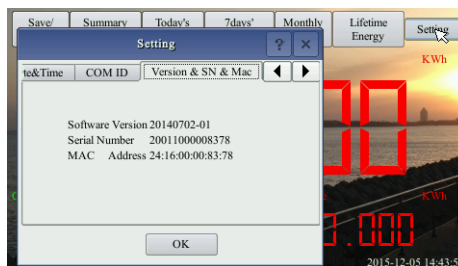
Each PV site requires two registered email addresses: *end user* and *installer*

REGISTER A GATEWAY

Add BDG-256 gateway SN in the PV site information

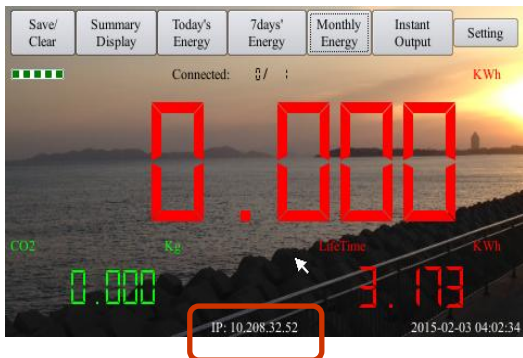


BDG-256 gateway SN can be found on touch screen Setting/ Version & SN & Mac

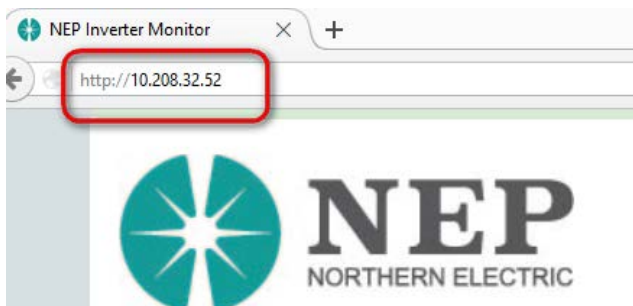


MICROVIEWER Local Monitoring

BDG-256 can be monitored by a smart device connected to the same router



Gateway IP address



NOTE: MICROVIEWER local monitoring uses BDG-256 IP address as the link to an internal webpage

Wi-Fi Configuration Guide

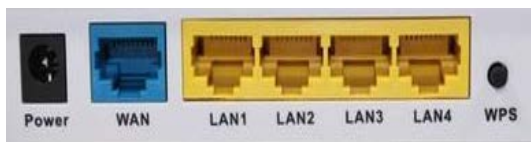
Method A: By Routers Support WPS

Step-1: Plug the wireless adapter to BDG-256 gateway, and wait for several seconds for several seconds

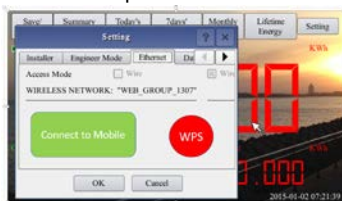


Wireless
Adapter

Step-2: Press the WPS button on the router for 2 seconds, and for most routers, the WPS button would flash at this point



Step-3: Within 2 minutes, return to the BDG-256 gateway, click on Setting/Ethernet, and press “WPS” (the red button). If the gateway reports the WPS setup is successful, the IP address on the gateway screen will be updated instead of 0.0.0.0 within 5 minutes



Method C: By Smart Mobile Devices

Step-1: On an iPhone, click on Settings/General/About. Input name “MI Installer”

Step-2: Turn on “Personal Hotspot”, and input Wi-Fi Password “my-gateway”. This password is for other devices such as the BDG-256 gateway to connect to this mobile device.

Step-3: On the BDG-256 gateway, click on Setting/Ethernet, and choose “Connect to Mobile” or “Link to Mobile” (the green button).



Step-4: If the connection has been set, a flashing banner “Personal Hotspot: 1 Connection” will appear at the top of the iPhone screen.

Step-5: Continue from **Step-3** of **Method B**

Step-6: After using the hot-spot communication, Wi-Fi setup can be restored, if the Wi-Fi configuration in BDG-256 gateway is not changed by hot-spot link. First hit on the button “Disconnect from Mobile” (see Step-3), and then reboot the gateway, then the Wi-Fi connection will be restored.

NOTE:

1. set the name of the hotspot link as “MI Installer”
2. set the password of the hotspot link as “my-gateway”

Method B: By Routers Do Not Support WPS

Step-1: Connect the BDG gateway to a router with a cable, and a few seconds later, an IP address will appear at the bottom of the BDG-256 screen;

Step-2: Log on to the webpage: http://BDG_IP/wifi (BDG-IP refers to the IP shown at the bottom of BDG-256 screen, e.g. 10.208.32.52)

Step-3: Set Wi-Fi parameters

Enter the password “gateway”

Wireless Network Setup

Set WLAN parameters and save your settings

Wireless Network Setup

SSID: The name of the home wireless network.

Security type: The wireless adapter supports several security protocols. Please refer to the wireless router user’s manual for suitable type (default one works for most routers).

Password: The password for home wireless network.

DHCP: If yes, the wireless router will assign an IP to the gateway. This is most commonly used (no need to change unless for advanced users).

IP: If DHCP is set to “NO”, users could fix an IP to the gateway. This function is only for advanced users, who should be responsible for confliction with other network devices if this IP address is not set properly.

Step-4: plug in the wireless adapter, and then reboot gateway

If Wi-Fi is connected, a signal strength bar at the left upper corner and an IP address at the bottom should be notified.

