



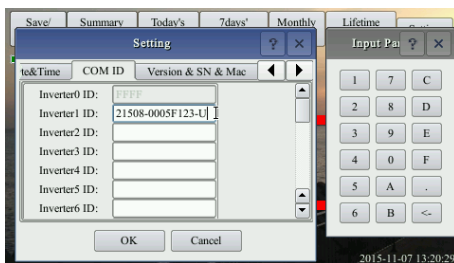
Quick Installation Guide

BDG-256 GATEWAY

For more information, please visit our website: <http://www.northernep.com>

INPUT PVG SERIAL NUMBER

Through gateway touch screen



Through built-in web page

(e.g. <http://10.208.32.52/module>)

10.208.32.52 is the gateway IP at the bottom of the touch screen

Inverter COM-ID Administration

e.g. 21508-0005F123-U, input the whole string or '0005F123' or '5F123'

	submit
Inverter1:	30000020
Inverter2:	3000AFE0
Inverter3:	30032EE0
Inverter4:	00000534
Inverter5:	3003AB00
Inverter6:	3003AB01

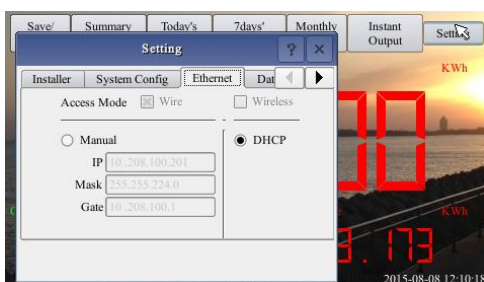


Note: Handheld barcode scanner is a very helpful tool in inputting the PVG SN

S/N format: (e.g. 21508-3005F123-U, input the whole string "21508-3005F123-U" or "3005F123")

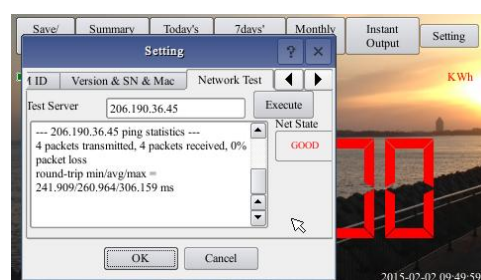
CONNECT TO INTERNET

BDG-256 can be connected to internet **using a cable**. "DHCP" is the default option and most commonly used.



TEST NETWORK CONNECTION

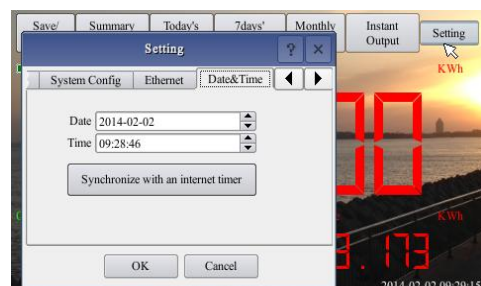
Navigate through "**Setting**" to "**Network Test**", and then click on "**Execute**". If the "Net State" shows **Good**, then the gateway has connected to internet.



Refer to "**Wi-Fi Configuration Guide**" for setting up Wi-Fi



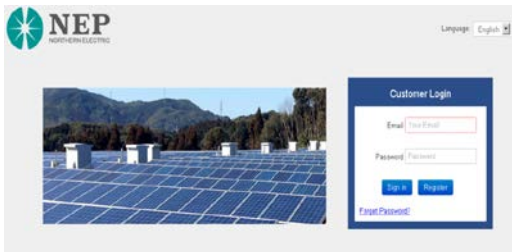
SET DATE/TIME



NEPVIEWER Remote Monitoring

<http://user.nepviewer.com/>

Follow the instructions and fill in information



NOTE: NEPVIEWER supports *IE 9.0 or later, Firefox, Chrome, Apple iOS and Android* web browsers

REGISTER USER ACCOUNT

UserType End User Installer

Email

Verification code sent to you by email

Verification code is sent to the email address registered

ADD PV SITE INFORMATION

Each PV site requires two registered email addresses: *end user and installer*

* User Email

* Country_Name

* Name of Your Plant

* Latitude

* Longitude

* Timezone

* Temperature Unit

* Power of Plant (kW)

* Currency Unit Local /1 kWh

Module Manufacture & Type

* Installer Email

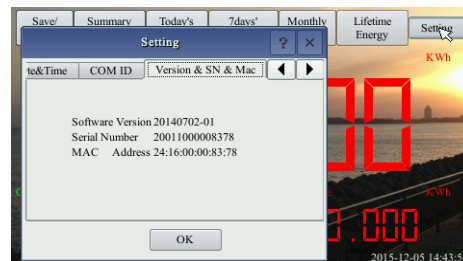
REGISTER A GATEWAY

Add BDG-256 gateway SN in the PV site information

Preview

* Gateway S/N

BDG-256 gateway SN can be found on touch screen Setting/ Version & SN & Mac



Mobile APP

Search for "NEPViewer" at APP store



Wi-Fi Configuration Guide

Method A: By Routers Support WPS

Step-1: Plug the wireless adapter to BDG-256 gateway, and wait for several seconds for several seconds



Wireless
Adapter

Step-2: Press the WPS button on the router for 2 seconds, and for most routers, the WPS button would flash at this point



Step-3: Within 2 minutes, return to the BDG-256 gateway, click on Setting/Ethernet, and press “WPS” (the red button). If the gateway reports the WPS setup is successful, the IP address on the gateway screen will be updated instead of 0.0.0.0 within 5 minutes

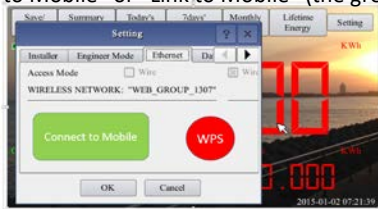


Method C: By Smart Mobile Devices

Step-1: On an iPhone, click on Settings/General/About. Input name “MI Installer”

Step-2: Turn on “Personal Hotspot”, and input Wi-Fi Password “my-gateway”. This password is for other devices such as the BDG-256 gateway to connect to this mobile device.

Step-3: On the BDG-256 gateway, click on Setting/Ethernet, and choose “Connect to Mobile” or “Link to Mobile” (the green button).



Step-4: If the connection has been set, a flashing banner “Personal Hotspot: 1 Connection” will appear at the top of the iPhone screen.

Step-5: Continue from **Step-3** of **Method B**

Step-6: After using the hot-spot communication, Wi-Fi setup can be restored, if the Wi-Fi configuration in BDG-256 gateway is not changed by hot-spot link. First hit on the button “Disconnect from Mobile” (see Step-3), and then reboot the gateway, then the Wi-Fi connection will be restored.

NOTE:

1. set the name of the hotspot link as “MI Installer”
2. set the password of the hotspot link as “my-gateway”

Method B: By Routers Do Not Support WPS

Step-1: Connect the BDG gateway to a router with a cable, and a few seconds later, an IP address will appear at the bottom of the BDG-256 screen;

Step-2: Log on to the webpage: http://BDG_IP/wifi (BDG-IP refers to the IP shown at the bottom of BDG-256 screen, e.g. 10.208.32.52)

Step-3: Set Wi-Fi parameters

Enter the password “gateway”

Wireless Network Setup

Set WLAN parameters and save your settings

Wireless Network Setup

SSID: The name of the home wireless network.

Security type: The wireless adapter supports several security protocols. Please refer to the wireless router user’s manual for suitable type (default one works for most routers).

Password: The password for home wireless network.

DHCP: If yes, the wireless router will assign an IP to the gateway. This is most commonly used (no need to change unless for advanced users).

IP: If DHCP is set to “NO”, users could fix an IP to the gateway. This function is only for advanced users, who should be responsible for confliction with other network devices if this IP address is not set properly.

Step-4: plug in the wireless adapter, and then reboot gateway

If Wi-Fi is connected, a signal strength bar at the left upper corner and an IP address at the bottom should be notified.



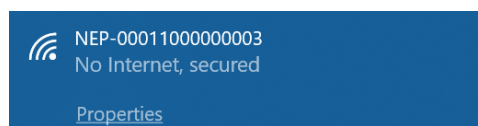
Method D: Using AP (Access Point) mode

Note: This method only applies to BDG-256 gateways with firmware version “20170701-01” or later, and with the “TP-LINK” WiFi dongle shipped inside the BDG-256 box;

Step-1: Click on the **AP** button on the BDG-256 gateway and follow the instructions to reboot the gateway. Note that after reboot the IP address at the bottom of the gateway is **192.168.99.1**



Step-2: Search for a WiFi network named NEP-xxxxxxxxxxxxxxx (xxxxxxxxxxxxxxx is the gateway SN) on a phone or computer, and link the phone or computer to this WiFi network, the password is **12345678**



Step-3: Log on to the webpage: <http://192.168.99.1/wifi> Enter password **gateway**

Step-4: The pull down menu **SSID List** shows all available WiFi networks. Click on **Search WiFi** may rescan the available WiFi networks. If the WiFi network is “hidden” and does not show in the list, the network name can also be input manually on the line of **SSID**

Wireless Network Setup

SSID: The name of the home wireless network.

Security type: The wireless adapter supports several security protocols. Please refer to the wireless router user’s manual for suitable type (default one works for most routers).

Password: The password for home wireless network.

DHCP: If yes, the wireless router will assign an IP to the gateway. This is most commonly used (no need to change unless for advanced users).

IP: If DHCP is set to “NO”, users could fix an IP to the gateway. This function is only for advanced users, who should be responsible for confliction with other network devices if this IP address is not set properly.

Step-5: Click on **Save**. Uncheck **AP** on the BDG-256 gateway touch screen and then reboot the gateway following instructions

If Wi-Fi is connected, a signal strength bar at the left upper corner and an IP address at the bottom should be notified.