



PV-Guard Module-Level Rapid Shutdown and Monitoring



Features



- Module level rapid shutdown
- Module level monitoring for service (option)
- Over temperature protection (auto RSD function)
- Optional enclosure for controller and data logger
- Certified for PVRSS with multiple inverters and for stand-alone independent RSD system



Zero cross talk interference through advanced signaling design



Support SunSpec compatible mode



Customized cable/connector harness

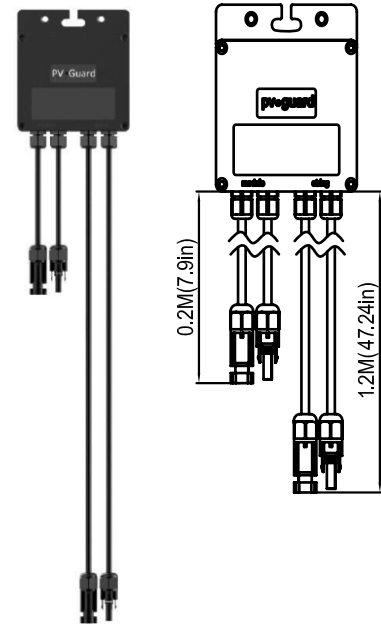


Compatible with IV Tracer for easy string and panel test



Hold multiple US patents

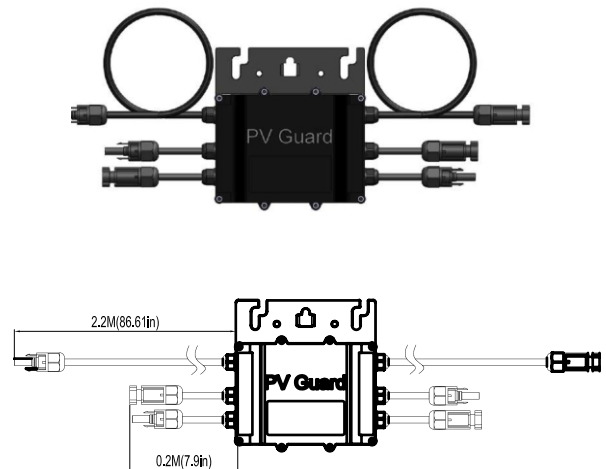
PVG-1-L



PANEL LEVEL RECEIVER DEVICES

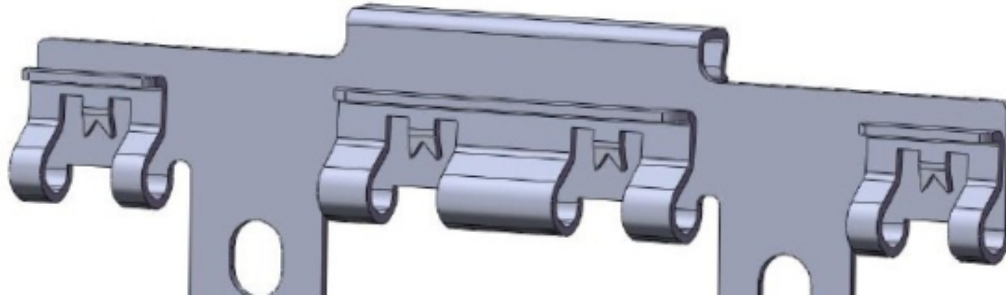
Input (DC)	Max DC Open Circuit Voltage per Input (Vdc)	90
	Max DC Current per input (Adc)	15
Output (DC)	Maximum Output Voltage (Vdc)	Voc * n (n=1/2/3/4)
System	Maximum System Voltage (Vdc)	1500
Mechanics	PV Cable	12AWG
	PV Connectors	Mc4 (Contact NEP for other connectors options)
	Size (not including PV cable)	5.12' x 4.73' x 1.14' (PVG-1) 5.90' x 5.71' x 1.00' (PVG-2)
	Protection Degree	NEMA 6
	Operating Ambient Temperature	-40°C~+85°C
	Mounting Method	Rail, Frame (option)
Signal	Communications	DC Power Line Compatible with SunSpec
Certifications	Product Safety Compliance	UL 1741 CSA C22.2 No. 107.1 NEC 2014/2017 690.12 Canada CEC 2015 64-218

PVG-2-L



* Contact NEP for other cable lengths and connector configurations

Frame Mount Clip

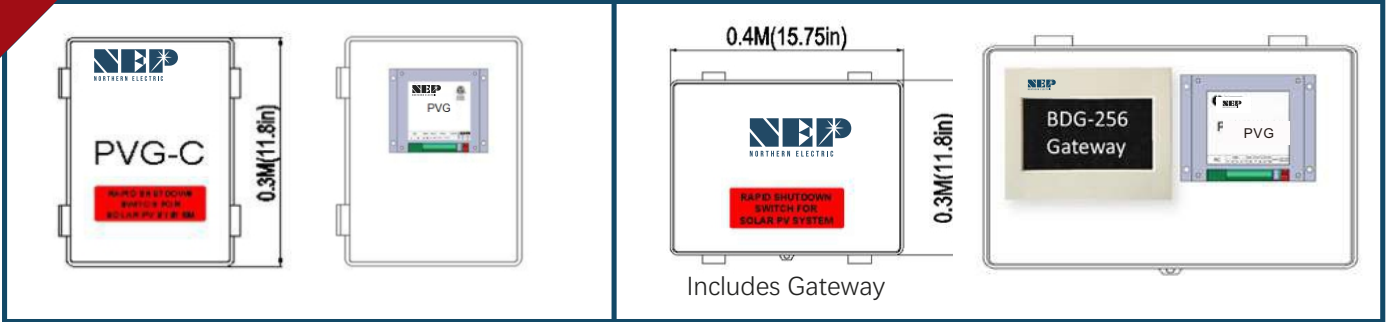


Ordering Information

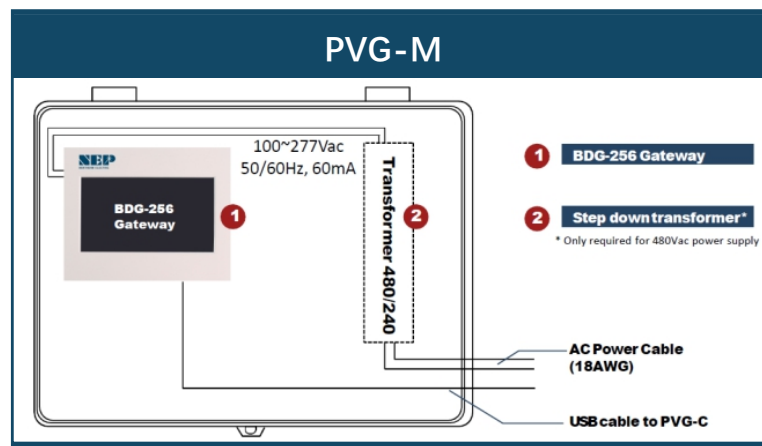
Part Number	Product
NC0099-A1	PVG-1-L(MC4)
NC0095-A1	PVG-2-L(MC4)
NC0080	PVG-E
NC0076	PVG-O
NC0143	PVG-M
M4010507	Frame mount clip set

PVG-E

PVG-O



Model		PVG-E	PVG-O
Power supply	AC Input	100-480 Vac.200mA, 50/60 HZ	
System	Maximum System Voltage (Vdc)	1500	
Mechanics	Size	7.9' x11.8' x 6.7'	15.79' x11.8' x 6.7'
	Protection Degree	IP65	
	Operating Ambient Temperature	-20°C--+85°C	
Signal	Communications	DC Power Line Compatible with SunSpec	
Certifications	Product Safety Compliance	UL 1741 CSA C22.2 No. 107.1 NEC 2014/2017 690.12 Canada CEC 2015 64-218	
Controls	Optional Controls	On-Grid / Off-Grid Primary / Secondary 5Vdc output for relay Optional built-in E-Stop	
Monitoring	Optional Monitoring	No	Panel-by-Panel with BDG-256



Model		PVG-M
Power supply	AC Input	100-480 Vac.200mA, 50/60 HZ
System	Maximum System Voltage (Vdc)	1500
Mechanics	Size	IP65
	Protection Degree	IP65
	Operating Ambient Temperature	-20°C--+85°C
Signal	Communications	DC Power Line Compatible with SunSpec
Certifications	Product Safety Compliance	UL 1741 CSA C22.2 No. 107.1 NEC 2014/2017 690.12 Canada CEC 2015 64-218
Controls	Optional Controls	On-Grid / Off-Grid Primary / Secondary 5Vdc output for relay Optional built-in E-Stop
Monitoring	Optional Monitoring	Panel-by-Panel with BDG-256

Ordering Information

Part Number	Product
NC0099-A1	PVG-1-L(MC4)
NC0095-A1	PVG-2-L(MC4)
NC0080	PVG-E
NC0076	PVG-O
NC0143	PVG-M
M4010507	Frame mount clip set