



Solar power conversion and data solutions for safety, performance and best lifecycle cost



C&I Inverter, Data for complete RSD Solution

December 2023



www.northernep.com



NEP Expanded RSD Solution

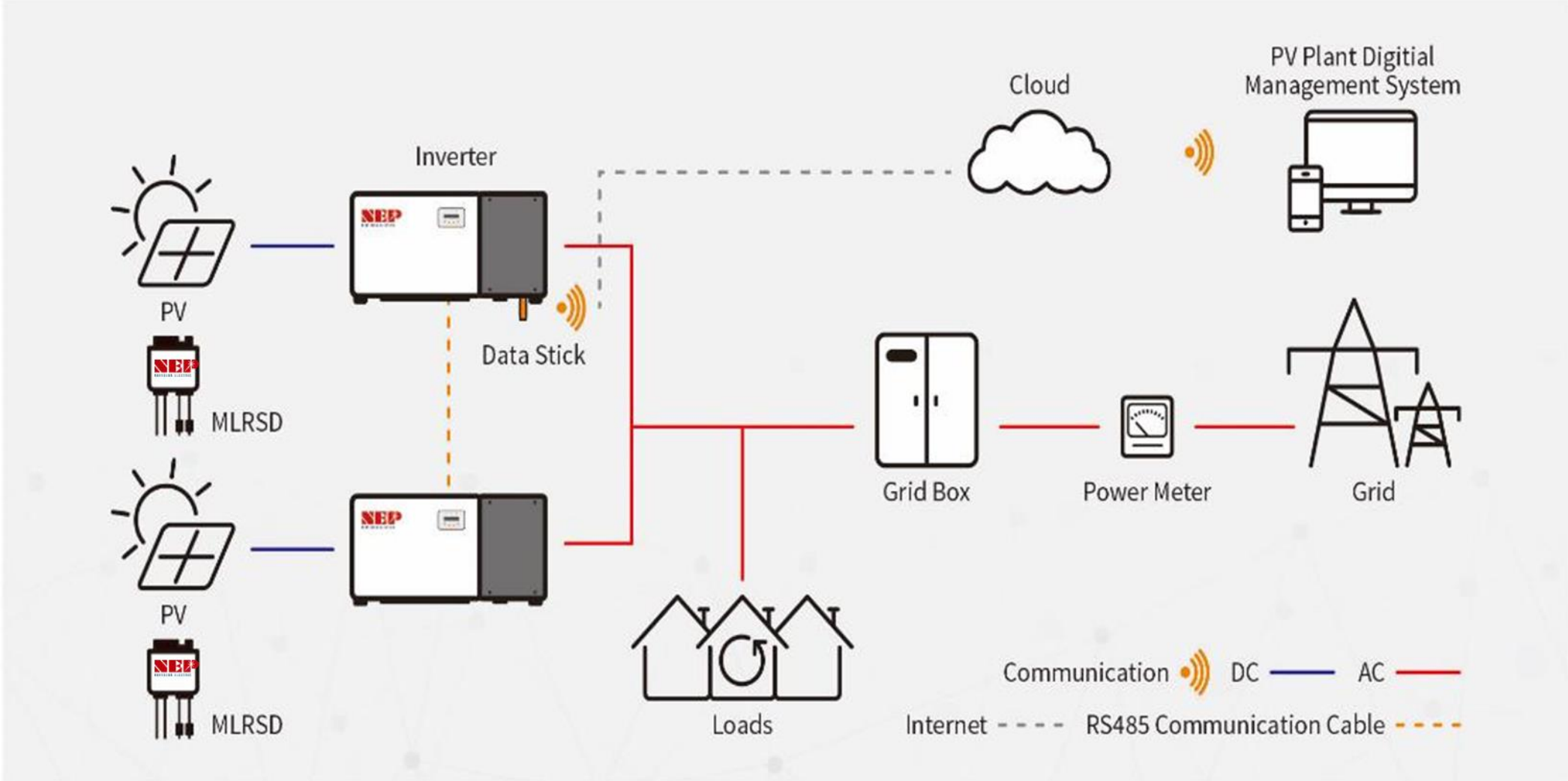
Data, Communications – “Galaxy” Solutions

Hardware

Integration

Smart phone and Web data

Complete RSD + Inverter + Data Solution... All from NEP



Inverters for any and all C&I Rooftops

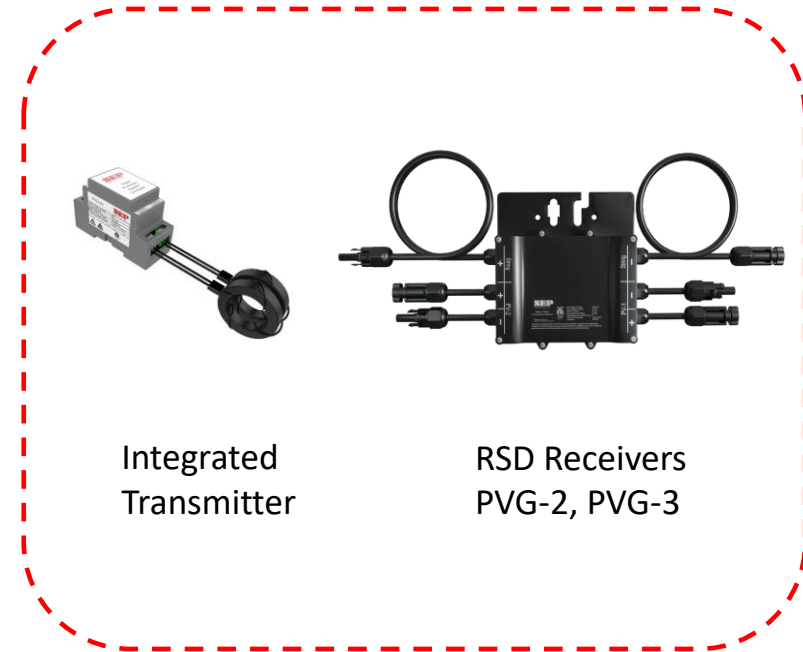


NEP-75KW
NEP-100KW

+



NEP-33KW
NEP-50KW
NEP-30KW-208Vac

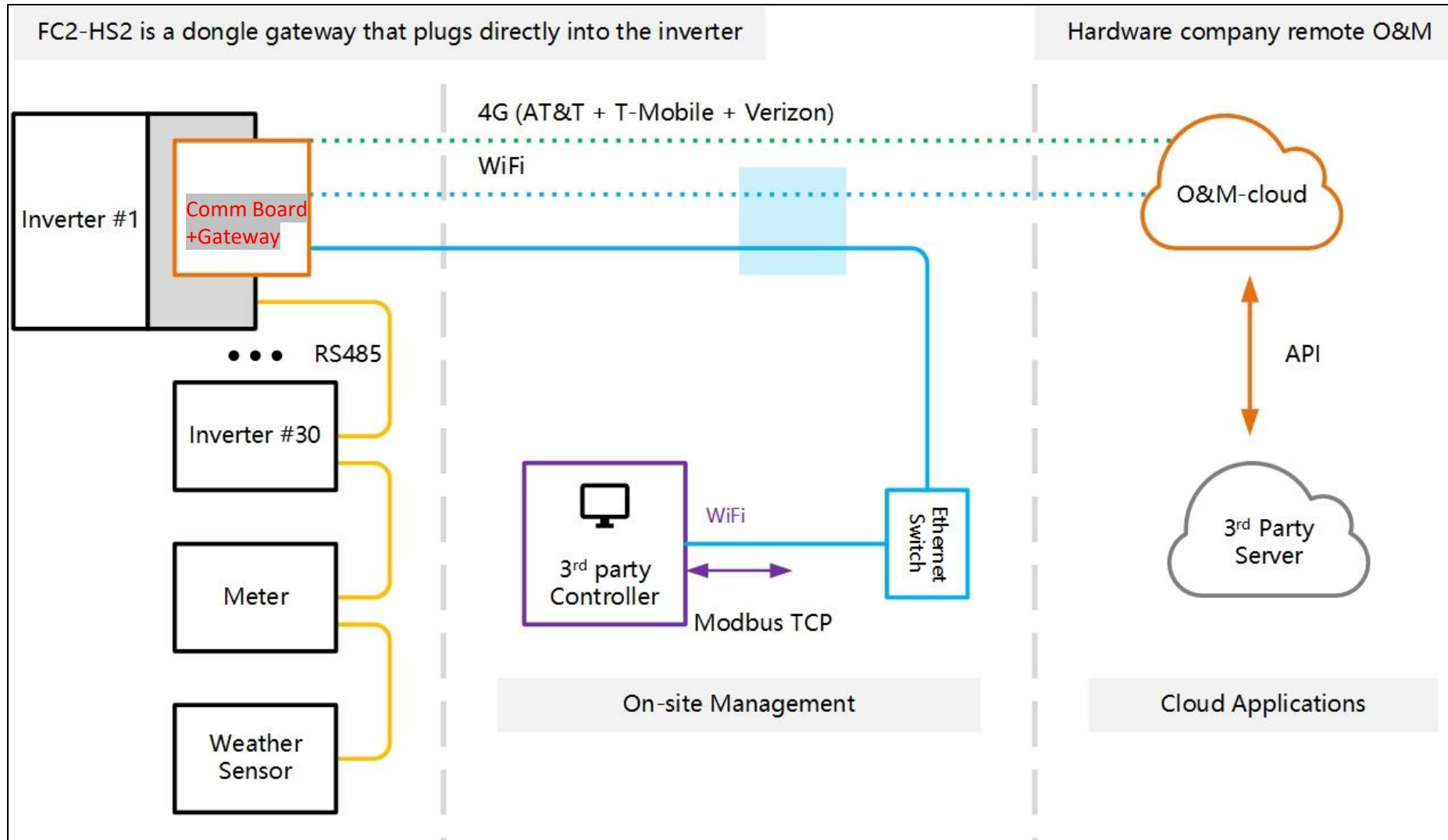


Integrated
Transmitter

RSD Receivers
PVG-2, PVG-3

- Elegant wire-box integration of NEP transmitter
- NEP Gateway inside wire-box
- No supplemental RSD related enclosures necessary
- NEP warranty wrap

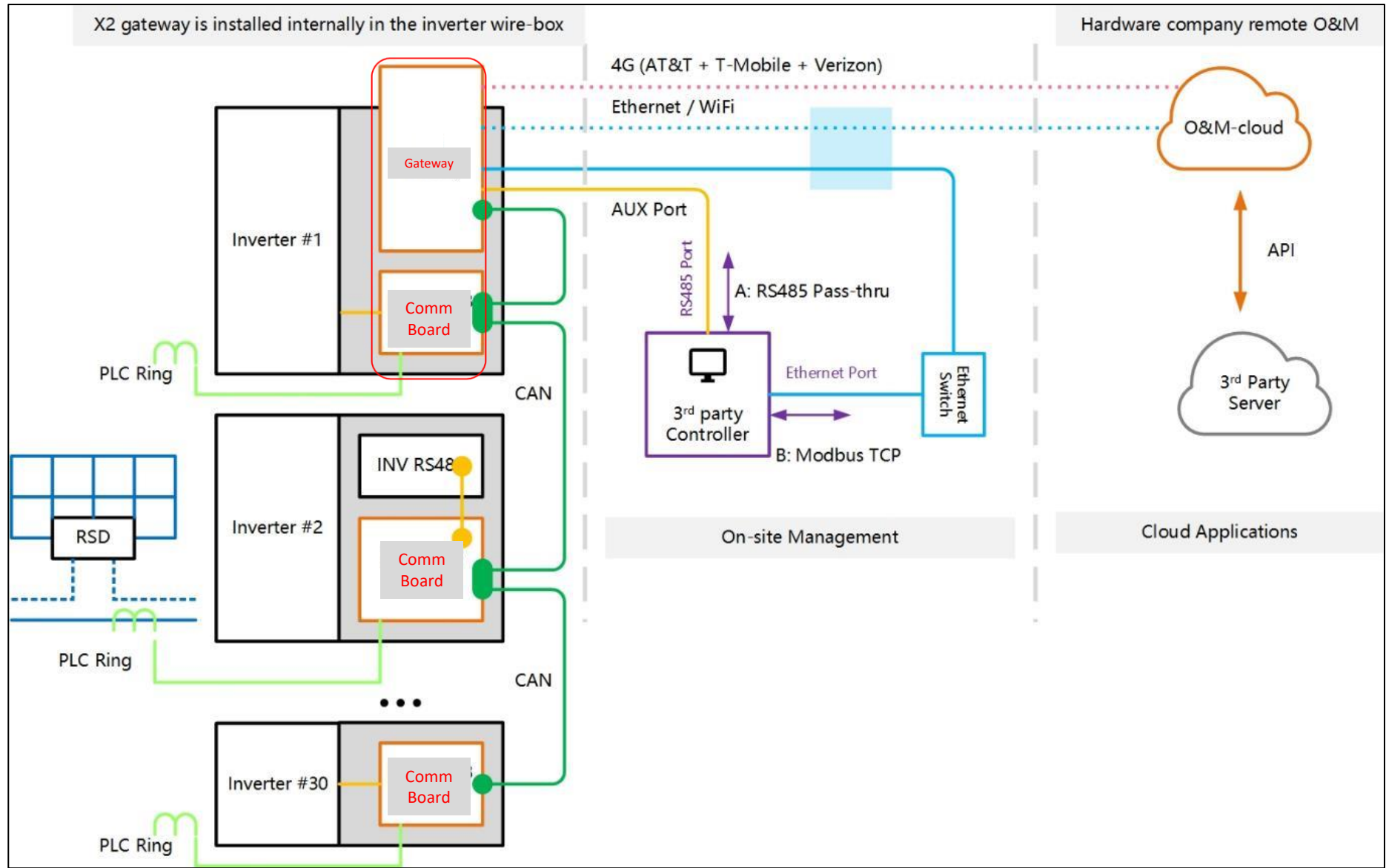
“Galaxy” Data, Communications Solution – (non-RSD example)



The "Smart Link" function of the APP allows users to automatically match complex hardware scenarios with just one click.

* Architecture example with no RSD functions

“Galaxy” Data communications – Rapid Shutdown Architecture



Gateway
+
Comm Board

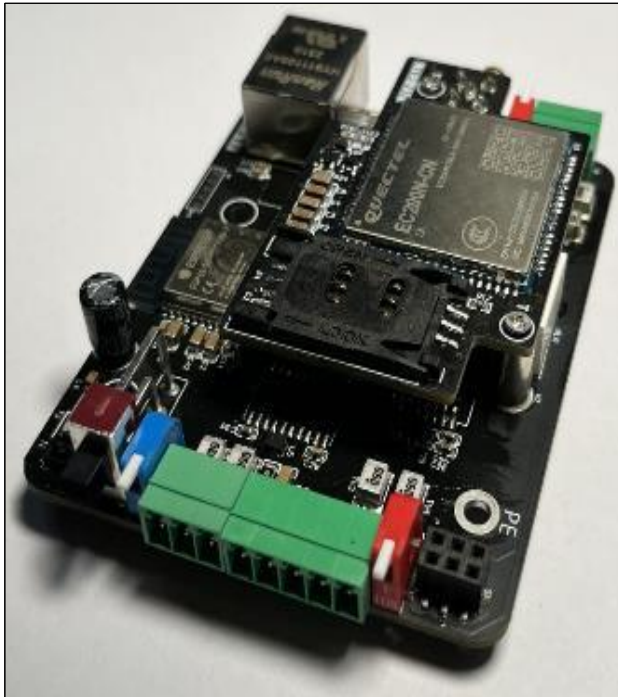
Inside inverter
wire-box

“Galaxy” Data hardware – Field integrated in NEPTUNE wire-boxes

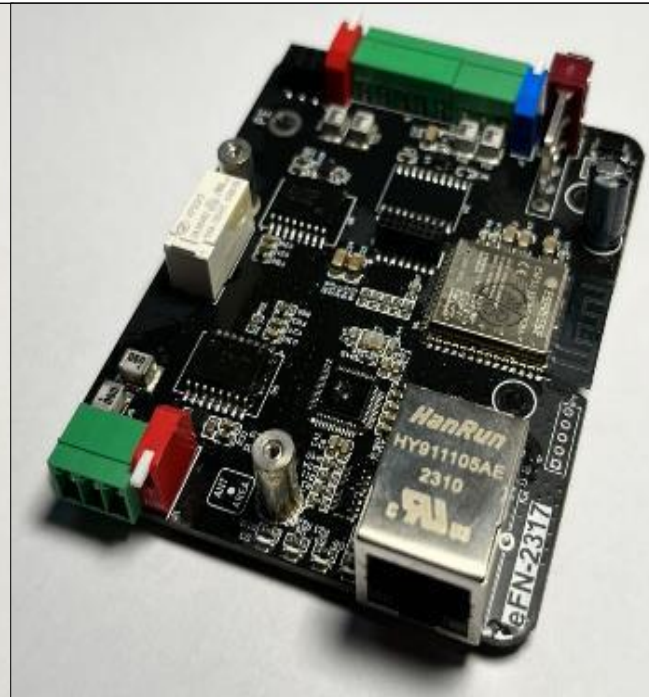
- Gateway communications boards
- High-performance response to real-time control of large sites
- Automated inverter commissioning
- Energy production management
- Smart Panel Level Monitoring
- Optional Cellular (Wifi, Ethernet standard)
- RSD and Inverter data
- One gateway supports up to 10 networked inverters

Example

Notice the “Cell” version is same Gateway as “Wifi” version with added cellular chip



Galaxy-Cell Gateway



Galaxy-Wifi Gateway



Comes with option for DAS box installation

NEP Data Solution – Galaxy-Maxi (CommBoard-100) for 75/100kW

Model Name	FCB-100
SKU	FD2C2F12001
Customer Code	TBD
Protocol Converter Specifications	
RS485 Interface	
No. of Ports	2 (2-pole Terminal Block and 4-pole Terminal Block)
Protocol	Modbus RTU and Custom
Modbus RTU Mode	Master
CAN Interface	
No. of Ports	1 (2-pole Terminal Block)
Signals	CAN_L, CAN_H
Terminator	120 ohms (configurable)
Isolation	3 kV (built-in)
Bluetooth Interface	
Standard	BLE 4.2
Antenna	Built-in
Power Parameters	
Input Voltage	5 to 24 Vdc
Power Consumption	1 W, Max. 2 W
Environmental Limits	
Operating Temperature	-30°C to 85°C (-22 to 185°F), Natural convection
Storage Temperature	-40 to 85°C (-40 to 185°F)
Ambient Relative Humidity	5 to 85% (non-condensing)
Physical Characteristics	
IP Rating	IP20
Dimensions	210 mm / 94 mm / 19 mm
Weight (without housing)	86g

Packaging and accessories	
Dimension of packaging box	253*152*40mm
Total Weight	0.17KG
Protocol Converter	1 * FCB-100
Connector	1 * EDG-3.5-3P, 1 * EDG-3.5-5P, 2 * EDG-5.08-2P
Documentation	Quick guide QR-code on stickers

Packaging and accessories photos	
Protocol Converter	

One CommBoard Per inverter

To network up to 10 inverters

Gateway mounts on one inverter CommBoard in the network.

NEP Data Solution – Galaxy-Mini (CommBoard-60) for the 30/33/50kW

Model Name	FCB-60
SKU	FD2C3F12001
Customer Code	TBD
Protocol Converter Specifications	
RS485 Interface	
No. of Ports	2 (2-pole Terminal Block and 8-pole Terminal Block)
Protocol	Modbus RTU and Custom
Modbus RTU Mode	Master
CAN Interface	
No. of Ports	1 (2-pole Terminal Block)
Signals	CAN_L, CAN_H
Terminator	120 ohms (configurable)
Isolation	3 kV (built-in)
Bluetooth Interface	
Standard	BLE 4.2
Antenna	Built-in
Power Parameters	
Input Voltage	5 to 24 Vdc
Power Consumption	1 W, Max. 2 W
Environmental Limits	
Operating Temperature	-30°C to 85°C (-22 to 185°F), Natural convection
Storage Temperature	-40 to 85°C (-40 to 185°F)
Ambient Relative Humidity	5 to 85% (non-condensing)
Physical Characteristics	
IP Rating	IP20
Dimensions	125 mm / 107 mm / 15 mm
Weight (without housing)	48g

Packaging and accessories	
Dimension of packaging box	153*153*51mm
Total Weight	0.13KG
Protocol Converter	1 * FCB-60
Cable	1 * DC power cable
Connector	2 * EDG-3.5-2P, 3 * EDG-5.08-2P
Documentation	Quick guide QR-code on stickers

Packaging and accessories photos	
Protocol Converter	
Accessories	

One CommBoard Per inverter

To network up to 10 inverters

Gateway mounts on one inverter CommBoard in the network.

NEP Data Solution – Galaxy-Wifi Gateway (mounts on Mini and Maxi CommBoards)

One inverter per site shall host a Gateway in the wire-box mounted on the Comm Board – One Gateway per up to 10 inverters, typically

Model Name	FC2-EWX2-S
SKU	FC2A2F12002
Customer Code	TBD
Gateway Specifications	
RS485 Interface	
No. of Ports	1 (5-pole Terminal Block)
Protocol	Modbus RTU
Modbus RTU Mode	Master
CAN Interface	
No. of Ports	1 (3-pole Terminal Block)
Signals	CAN_L, CAN_H, CAN Signal GND
Terminator	120 ohms (configurable)
Isolation	3 kV (built-in)
AUX Interface	
No. of Ports	1 (5-pole Terminal Block)
Protocol	Modbus RTU
Modbus RTU Mode	Slave (RS485 Pass-thru)
Terminator for RS485	120 ohms
Isolation	5 kV
Ethernet Interface	
10/100BaseTX Ports	1 (RJ45 Connector)
Cloud Applications	MQTT
SCADA controllers on the same LAN subnet	Modbus TCP
Modbus TCP	
Mode	Server (Slave)
Max. No. of Client Connections	2
WLAN Interface	
WLAN Standards	802.11 b/g/n
Frequency Band	2.4 GHz
Wireless Security	WEP, WPA/WPA2
Antenna	Built-in
Bluetooth Interface	

Standard	BLE 4.2
Antenna	Built-in
Power Parameters	
Input Voltage	5 to 24 Vdc
Power Consumption	2.5 W, Max. 5 W
Environmental Limits	
Operating Temperature	-30°C to 85°C (-22 to 185°F), Natural convection
Storage Temperature	-40 to 85°C (-40 to 185°F)
Ambient Relative Humidity	5 to 85% (non-condensing)
Physical Characteristics	
Housing	Plastic
IP Rating	IP20
Dimensions (without housing)	93 mm / 69 mm / 21 mm
Dimensions (includes housing)	95 mm / 77 mm / 32 mm
Weight (without housing)	48g
Weight (includes housing)	148g
Standards and Certifications (DoC)	
CE-EMC	EN 55032 EN 55035 EN 61000-3-2 EN 61000-3-3
CE-RED	EN 301 908 EN 300 328 EN 301 489-1 / -17 / -52 EN 62368-1
CE-LVD	EN 62368-1
FCC SDoC	Part 15B
FCC ID	Part 15C

Packaging and accessories	
Dimension of packaging box	235*125*65mm
Total Weight	0.26KG
Gateway	1 * FC2-EWX2-S

Plastic housing	1 * Housing, 1 * DIN rail mounting clips, 2 * M4 Screw 3 * Standoff and M3 Screw
Cable	1 * CAN jumper, 1 * DC power cable
Connector	2 * EDG-3.5-3P, 1 * EDG-3.5-5P, 1 * EDG-5.08-2P
Documentation	Quick guide QR-code on stickers



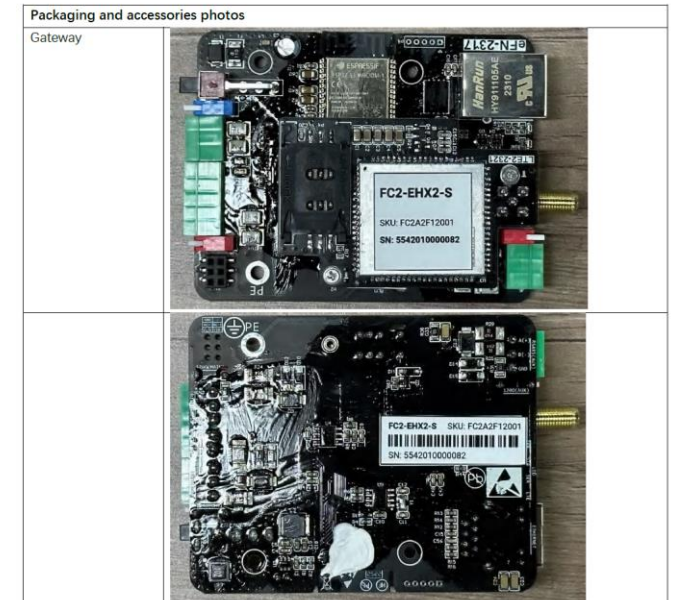
NEP Data Solution – Galaxy-Cell Gateway (mounts on Mini and Maxi CommBoards)

One inverter per site shall host a Gateway in the wire-box mounted on the Comm Board – Typically one Gateway per up to 10 inverters
This is the Gateway with optional Cellular functionality on board. Includes sim card with 5 years of cellular data.

Model Name	FC2-EHX2-S
SKU	FC2A2F12001
Customer Code	TBD
Gateway Specifications	
RS485 Interface	
No. of Ports	1 (5-pole Terminal Block)
Protocol	Modbus RTU
Modbus RTU Mode	Master
CAN Interface	
No. of Ports	1 (3-pole Terminal Block)
Signals	CAN_L, CAN_H, CAN Signal GND
Terminator	120 ohms (configurable)
Isolation	3 kV (built-in)
AUX Interface	
No. of Ports	1 (5-pole Terminal Block)
Protocol	Modbus RTU
Modbus RTU Mode	Slave (RS485 Pass-thru)
Terminator for RS485	120 ohms
Isolation	5 kV
Ethernet Interface	
10/100BaseTX Ports	1 (RJ45 Connector)
Cloud Applications	MQTT
SCADA controllers on the same LAN subnet	Modbus TCP
Modbus TCP	
Mode	Server (Slave)
Max. No. of Client Connections	2
WLAN Interface	
WLAN Standards	802.11 b/g/n
Frequency Band	2.4 GHz
Wireless Security	WEP, WPA/WPA2
Antenna	Built-in
Bluetooth Interface	

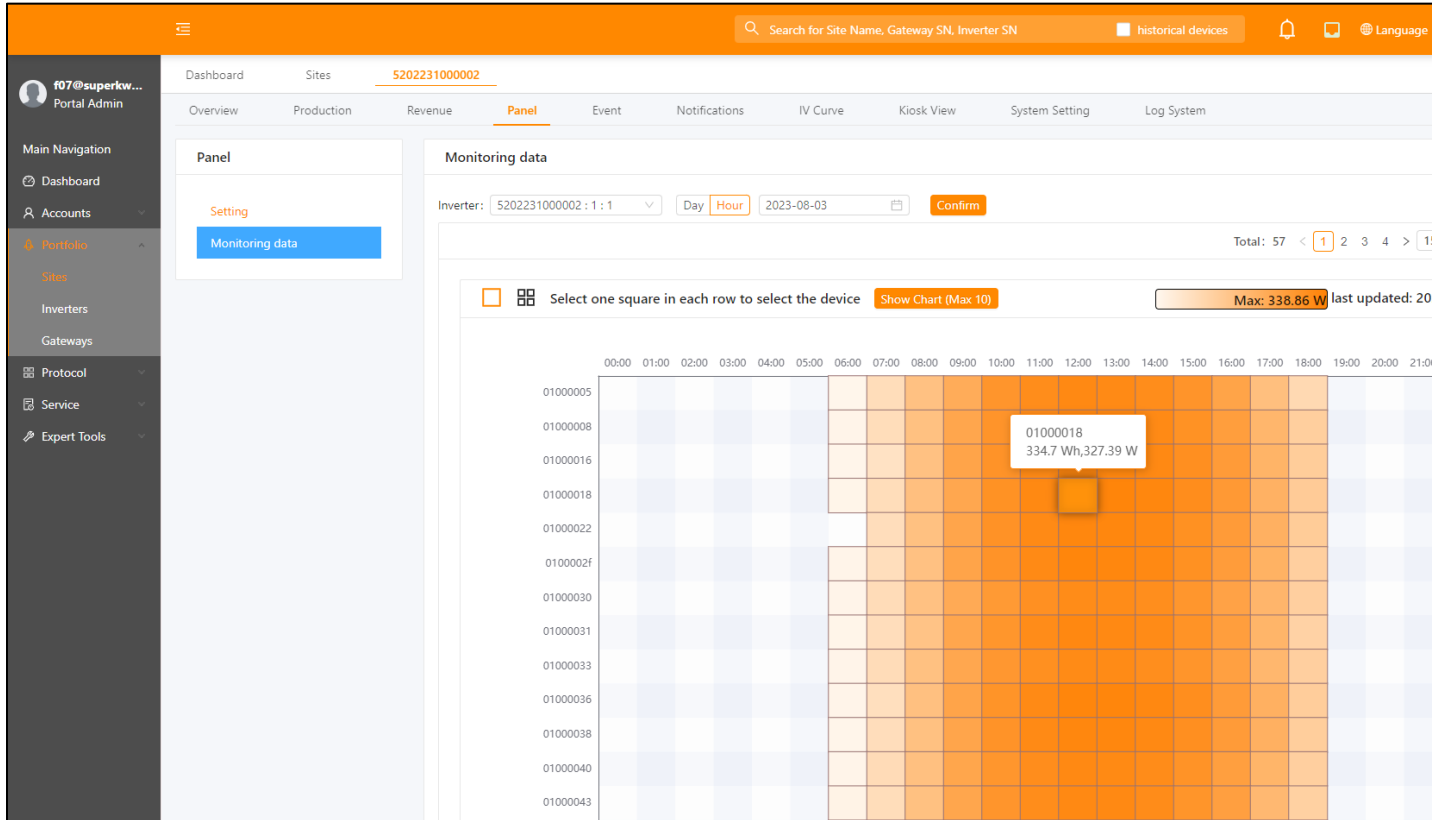
Standard	BLE 4.2
Antenna	Built-in
Cellular Interface	
Cellular Standards	LTE-FDD/LTE-TDD
No. of SIM Slot	1
Cellular Antenna Connectors	1 SMA female
Power Parameters	
Input Voltage	5 to 24 Vdc
Power Consumption	2.5 W, Max. 5 W
Environmental Limits	
Operating Temperature	-30°C to 85°C (-22 to 185°F), Natural convection
Storage Temperature	-40 to 85°C (-40 to 185°F)
Ambient Relative Humidity	5 to 85% (non-condensing)
Physical Characteristics	
Housing	Plastic
IP Rating	IP20
Dimensions (without housing)	101 mm / 69 mm / 21 mm
Dimensions (includes housing)	103 mm / 77 mm / 32 mm
Weight (without housing)	67g
Weight (includes housing)	167g
Standards and Certifications (DoC)	
CE-EMC	EN 55032 EN 55035 EN 61000-3-2 EN 61000-3-3
CE-RED	EN 301 908 EN 300 328 EN 301 489-1 / -17 / -52 EN 62368-1
CE-LVD	EN 62368-1
FCC SDoC	Part 15B
FCC ID	Part 15C

Packaging and accessories	
Dimension of packaging box	260*235*70mm
Total Weight	0.9KG
Gateway	1 * FC2-EHX2-S
Plastic housing	1 * Housing, 1 * DIN rail mounting clips, 2 * M4 Screw 3 * Standoff and M3 Screw
Cable	1 * CAN jumper, 1 * DC power cable
Connector	2 * EDG-3.5-3P, 1 * EDG-3.5-5P, 1 * EDG-5.08-2P
Documentation	Quick guide QR-code on stickers
SIM532 Kit	1 * IP65 antenna with 3 meters cable, 1 * antenna bracket, 1 * SIM already plugged into the gateway



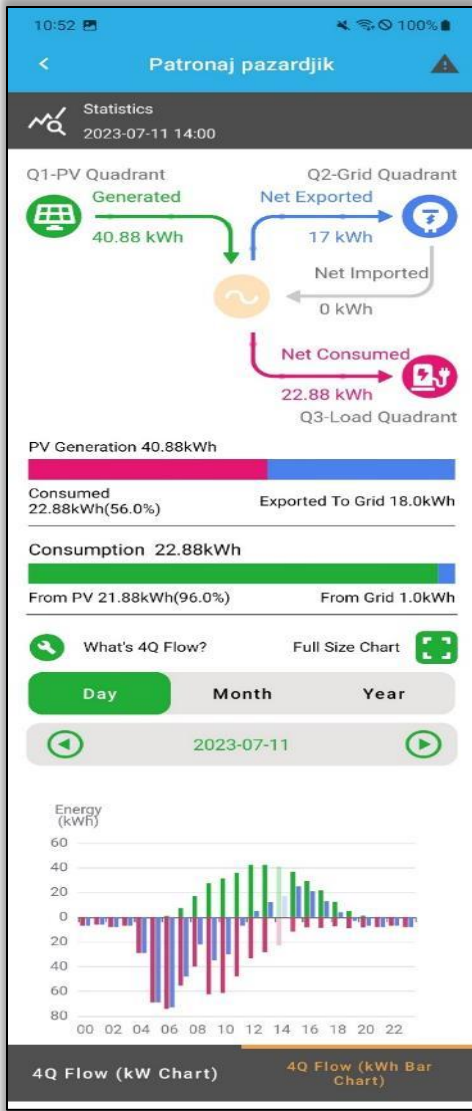
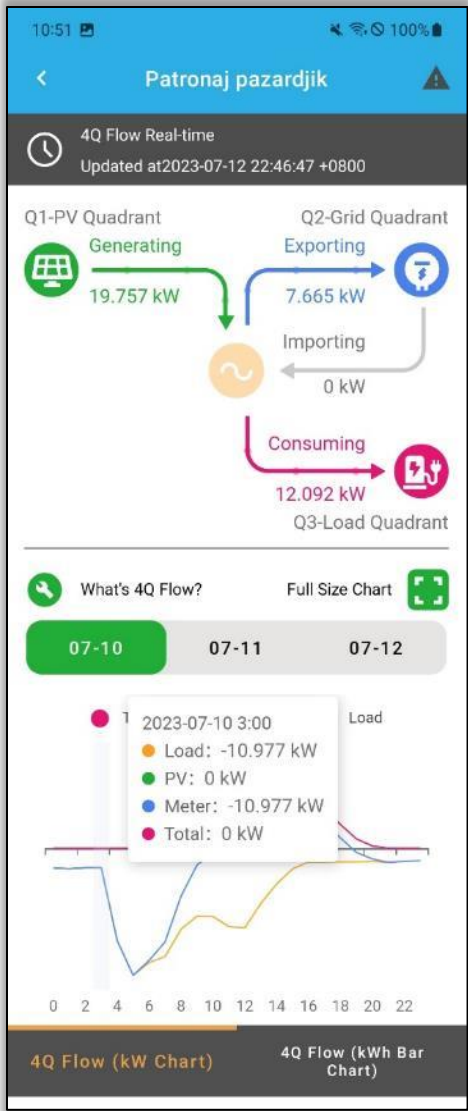
“Galaxy” Data – Web Portal for Inverter and RSD Device Data

- Inverter performance data
- PV Module data
- RSD Device data

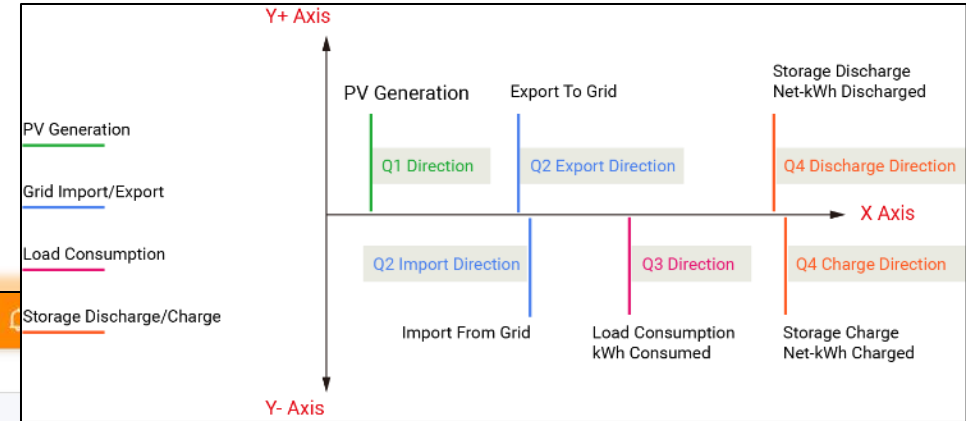
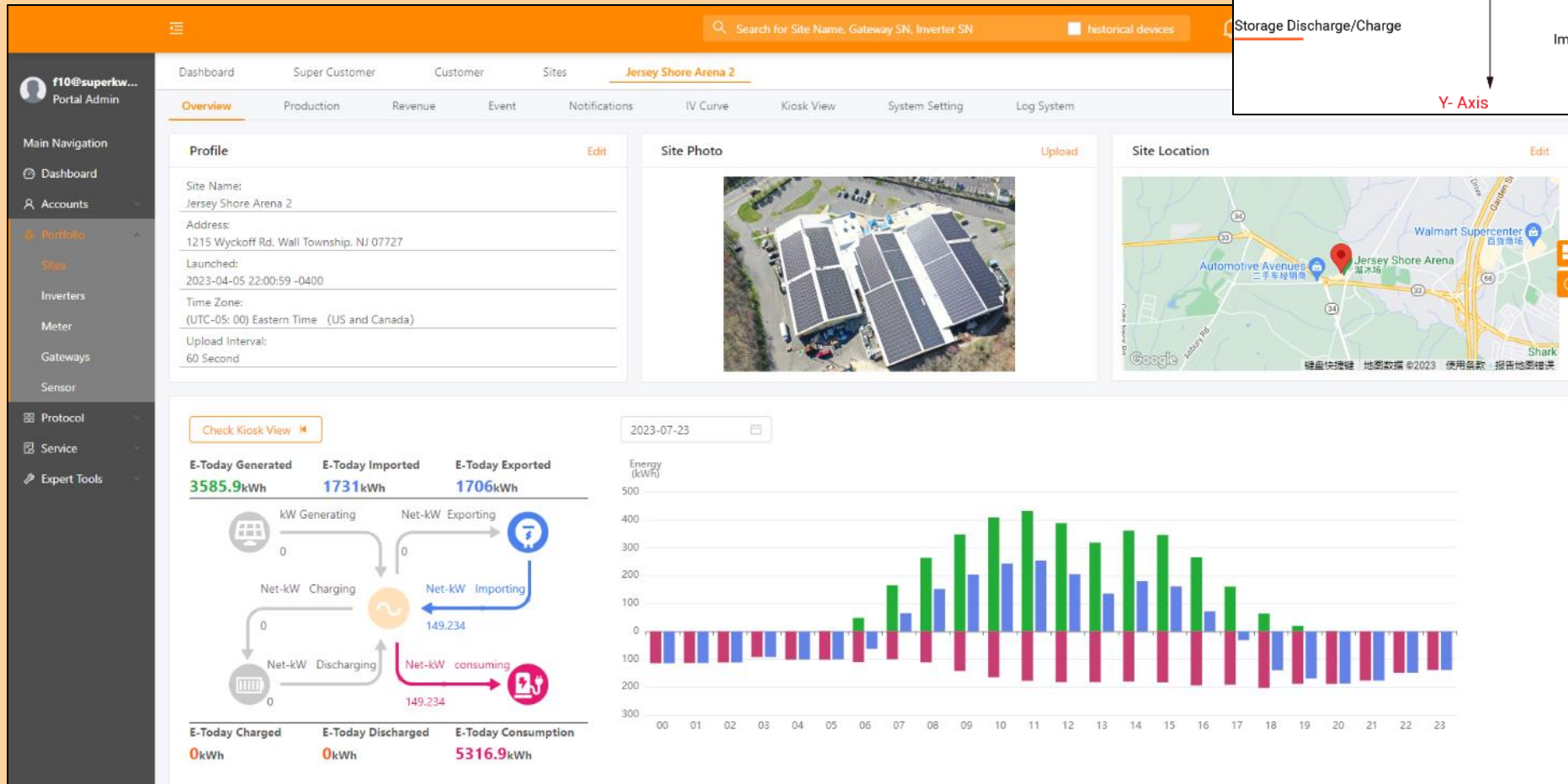


Smart phone App for commissioning and mobile data

“NEPTUNE GX”



“Galaxy” Data Example



“Galaxy” Data Example

